

THE DESIGN AND PLANNING IDEAS CONTAINED IN THESE DRAWINGS ARE THE PROPERTY OF WEBCO INC. AND ARE NOT TO BE REPRODUCED, COPIED, REPRODUCED, OR OTHERWISE USED OR COPIED BY ANY OTHER PERSON, ASSOCIATION, CORPORATION, OR COMPANY WITHOUT THE WRITTEN PERMISSION OF WEBCO INC. ANY REPRODUCTION OF THIS PLAN IS FOR INFORMATIONAL PURPOSES ONLY AND IS NOT TO BE USED FOR CONSTRUCTION OF A HOME WITHOUT THE WRITTEN PERMISSION OF WEBCO INC. SEE SPECIFICATIONS FOR DETAILS.



EXETER II

3920 HUNTINGTON AVE
(LEFT SIDE)

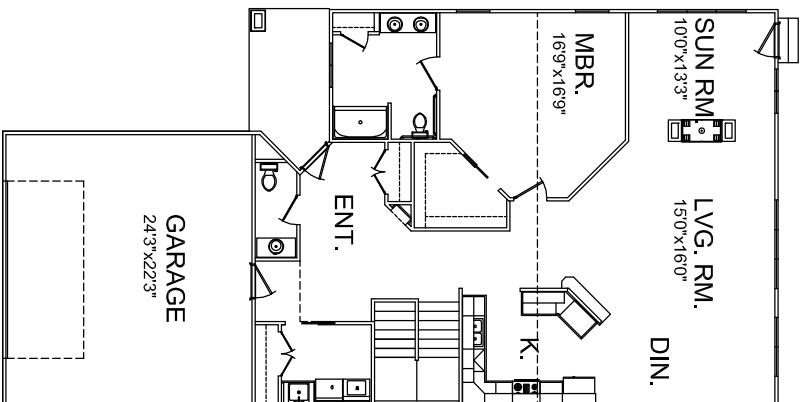
2009 Parade Home Special

~~\$309,900~~ **\$289,900**

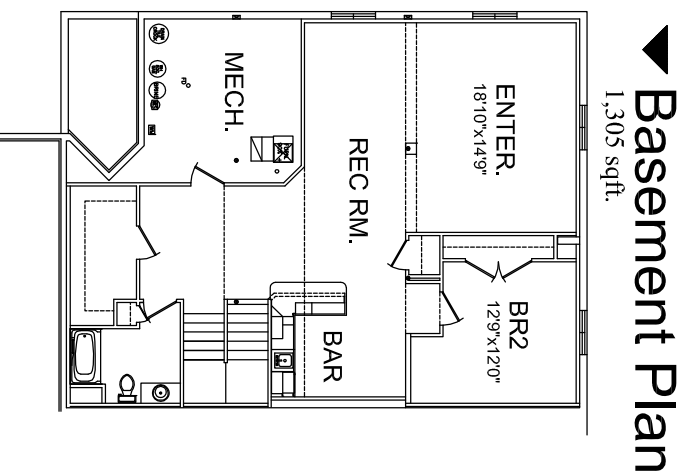
(Price is with offer made direct to Webco)

Included Extras!

- Vinyl siding with front accents
- 2 car garage with storage
- Living rm. with cathedral ceiling and fireplace
- Open kitchen
- First floor laundry
- 2 bedrooms, 2 1/2 baths
- Master bedroom with WIC
- Large master bath
- Finished lower level
- Lower level egress windows
- High efficiency furnace and central air conditioning
- Plus lots of extras !!!



▲ **1st Floor Plan**
1,621 sqft.



▲ **Basement Plan**
1,305 sqft.



WEBCO INC.
GENERAL CONTRACTORS

1615 NEUPORT AVE.
JANESVILLE, WISCONSIN 53545
PHONE: (608)-755-0710
FAX: (608)-752-2910
www.webcoinc.com

WEBCO
INC.
GENERAL CONTRACTORS